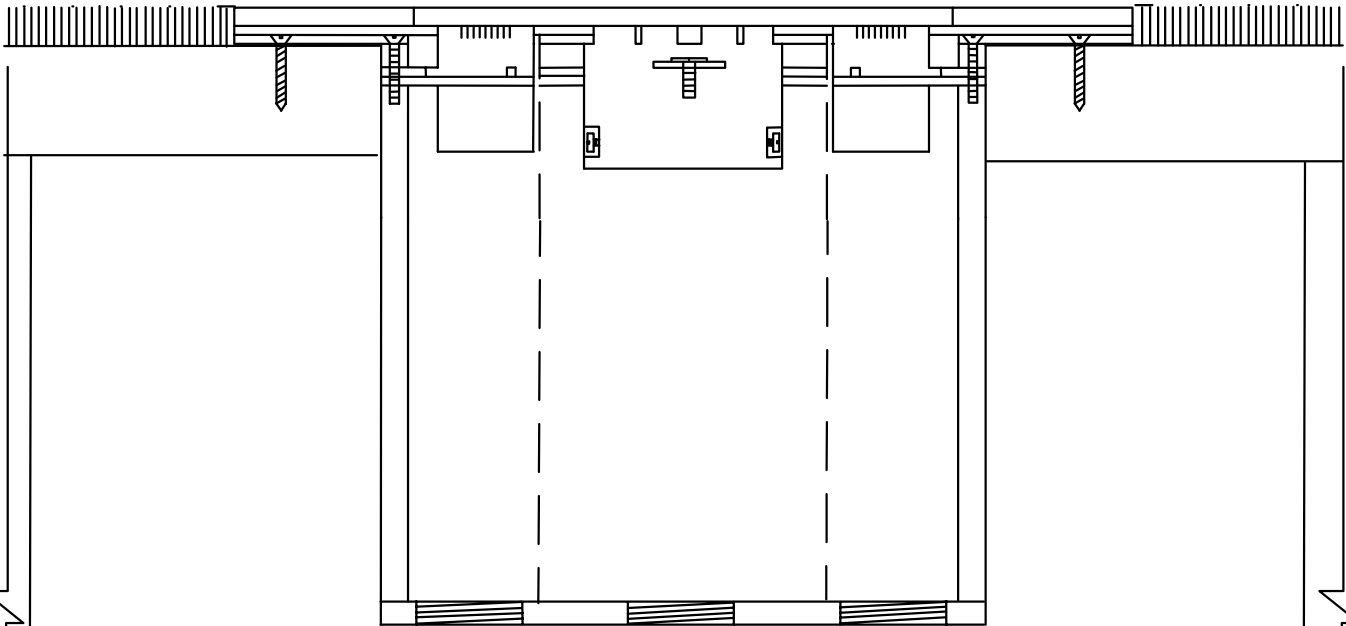


Residential Outlet flush with carpet or other 1/4" flooring



INSTALLATION INSTRUCTIONS FOR MOUNTING OF UNIT ON CARPET COVERED WOOD FLOORS AS SHOWN ABOVE:

- IN DESIRED LOCATION (BETWEEN FLOOR JOISTS), USING A 6-INCH HOLE SAW, CUT TO A DEPTH OF 1/4 INCH.
- USING A CHISEL, CHIP OUT WOOD ON THE INSIDE OF THE CUT LINE IN TOWARDS CENTER (APPROXIMATELY 1-1/4 INCHES).
- USING A 4-INCH HOLE SAW AND THE SAME CENTER USED FOR THE 6-INCH HOLE SAW, CUT THROUGH THE FLOOR.

FOR CERAMIC TILE, INSTALL MULTICONNECT UNIT BEFORE TILE INSTALLATION.

FOR SITUATIONS OF RETROFIT WHERE FLOOR CAN NOT BE CHISELED FOR FLUSH FIT, ORDER TAPERED FACEPLATE (TPR) WHICH HAS AN OUTSIDE TAPERED EDGE ON YOUR CONFIGURATION.

FOR ALL TYPES;

- REMOVE TOP COVER TO TOTALLY EXPOSE CONFIGURATION PLATE.
- REMOVE CONFIGURATION PLATE (4 SCREWS) TO EXPOSE MOUNTING PLATE WITH MOUNTING HOLES
- FASTEN THE UNIT TO THE FLOOR WITH #6 STAINLESS STEEL WOOD SCREWS
- CONNECT WIRES TO SUPPLIED CONNECTORS.
- RE-ASSEMBLE CONFIGURATION PLATE TO UNIT
- INSERT COVER PLATE.

ORDERING INFO-(SEE ABBREVIATIONS)

SLAB THICKNESS _____
 RECEPT.TYPE/colour _____
 DATA MANUF./colour _____
 COVER TYPE _____



FROM:



105 WILLOWLEA ROAD,
 OTTAWA ONT., CANADA
 K0A-1L0
 TEL.(613) 831-8102 FAX(613) 831-8103
 TOLL FREE 1-888-225-2478 e-mail info@nocom.ca
 web www.multiconnect.ca

JOB TITLE:

DRAWN BY:
tjp

APPROVED:
R.B.

DWG #
RESIDENTIAL
CROSS-SECTION
issue-R0

DATE:
06-04-20

SCALE:
n.t.s.