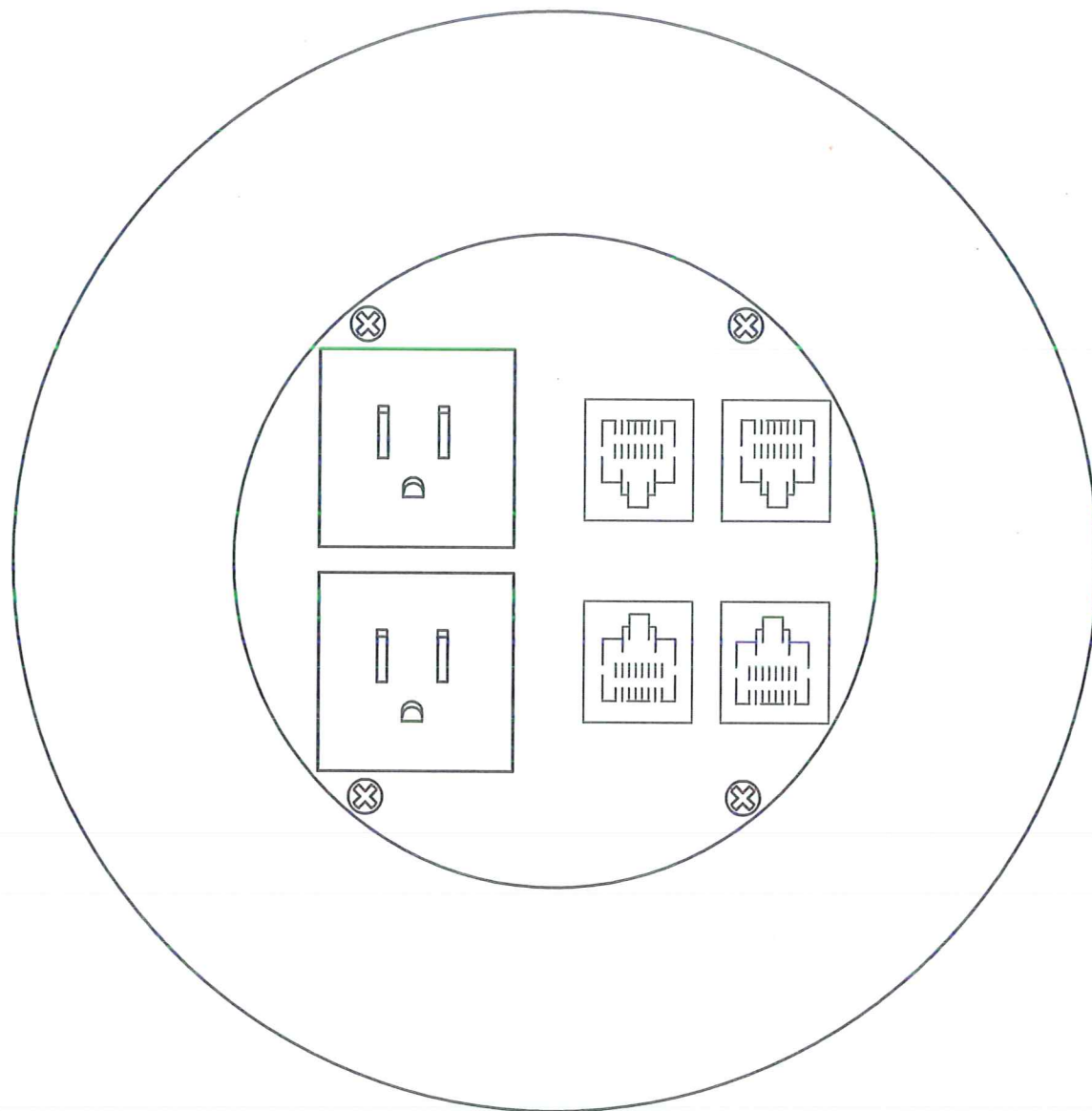


6"Dia



### MOI-PWR2-COMM4

2 openings for single receptacle and 4 openings for COMM jacks  
 (openings suitable for all manufacturers Keystone style jacks)  
 COMM jacks not supplied or installed by Nocom Inc.

#### NOTE:

Single receptacles shall be 5-15RA. 5-20RA available  
 Keystone style openings, or blanks or CSA/UL Recognized/  
 Classified or Listed comm jacks.

ORDERING INFO-(SEE ABBREVIATIONS)

SLAB THICKNESS \_\_\_\_\_  
 RECEPT.TYPE/colour \_\_\_\_\_  
 DATA MANUF./colour \_\_\_\_\_  
 COVER TYPE \_\_\_\_\_

**PROPRIETARY AND CONFIDENTIAL**

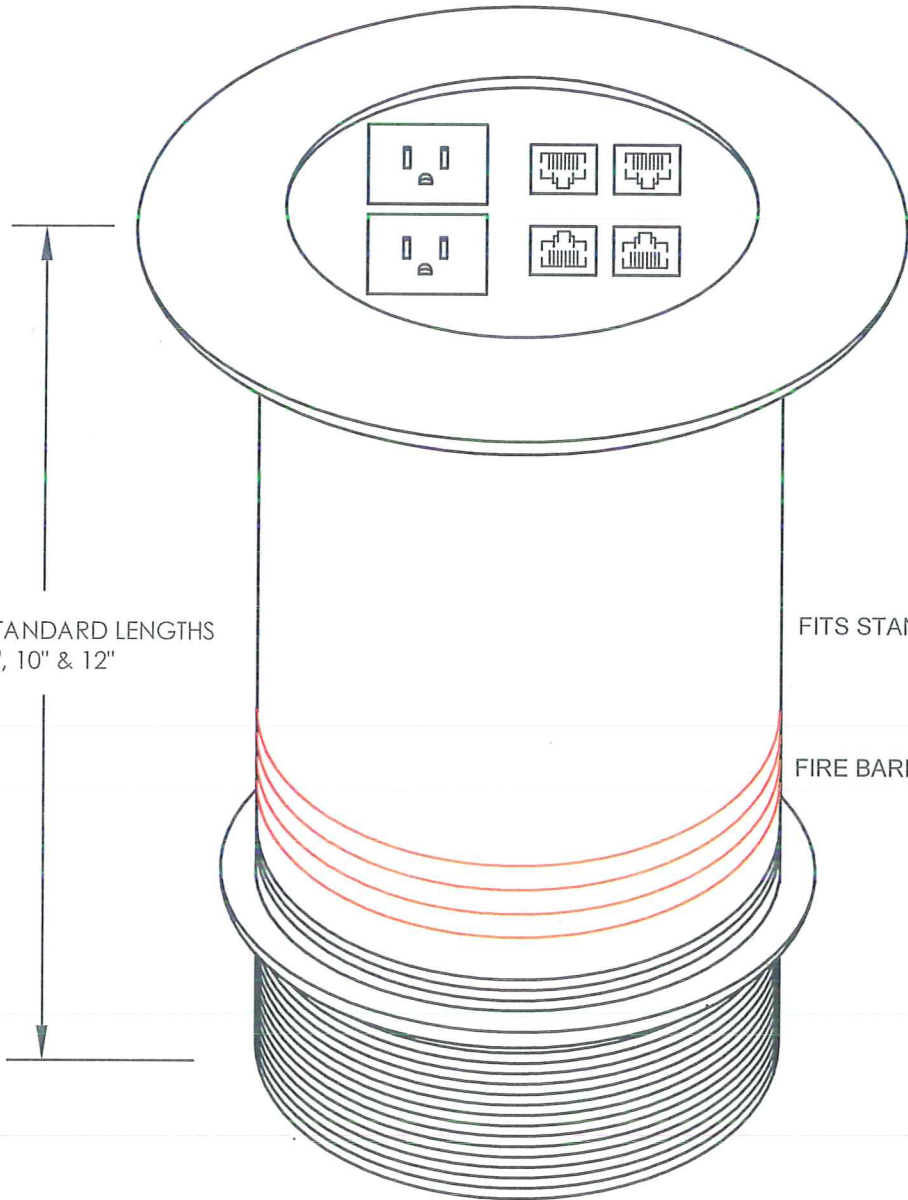
THE INFORMATION CONTAINED IN THIS DRAWING IS THE SOLE PROPERTY OF NOCOM. ANY REPRODUCTION IN PART OR AS A WHOLE WITHOUT THE WRITTEN PERMISSION OF NOCOM IS PROHIBITED.

		DIMENSIONS ARE IN MM TOLERANCES: ANGLES: ± DEGREE LINEAR: ± MM (UNLESS SPECIFIED)
		MATERIAL See Variant table
NEXT ASST	USED ON	FINISH
APPLICATION		DO NOT SCALE DRAWING

	NAME	DATE (yy-mm-dd)	JOB TITLE:
DRAWN	TJP	10-01-12	
CHECKED			
ENG. APPR.			
MFG APPR.			
Q.A.			
COMMENTS:			

**MULTICONNECT™**  
 by **NOCOM®**  
 888-225-2478 www.nocom.ca  
 SIZE A DWG. NO. MOI-PWR2-COMM4 REV.  
 SCALE=1:1 WEIGHT: SHEET 1 OF 3

COVER PER SUBMITTAL



-COMM jacks shall be CSA / UL Recognized/Classified or Listed, Keystone style to mount in comm. openings.

STANDARD LENGTHS  
8", 10" & 12"

FITS STANDARD 4" CORED HOLE


FIRE BARRIER-2 HOUR UL


ORDERING INFO-(SEE ABBREVIATIONS)

SLAB THICKNESS \_\_\_\_\_  
 RECEPT.TYPE/colour \_\_\_\_\_  
 DATA MANUF./colour \_\_\_\_\_  
 COVER TYPE \_\_\_\_\_

**PROPRIETARY AND CONFIDENTIAL**  
 THE INFORMATION CONTAINED IN THIS DRAWING IS THE SOLE PROPERTY OF NOCOM. ANY REPRODUCTION IN PART OR AS A WHOLE WITHOUT THE WRITTEN PERMISSION OF NOCOM IS PROHIBITED.

		DIMENSIONS ARE IN MM TOLERANCES: ANGLES: ± DEGREE LINEAR: ± MM (UNLESS SPECIFIED)		NAME	DATE (yy-mm-dd)	JOB TITLE:
				DRAWN	TJP	10-01-12
				CHECKED		
				ENG. APPR.		
				MFG APPR.		
				Q.A.		
				COMMENTS:		
NEXT ASST	USED ON	MATERIAL See Variet table				
		FINISH				
APPLICATION		DO NOT SCALE DRAWING				

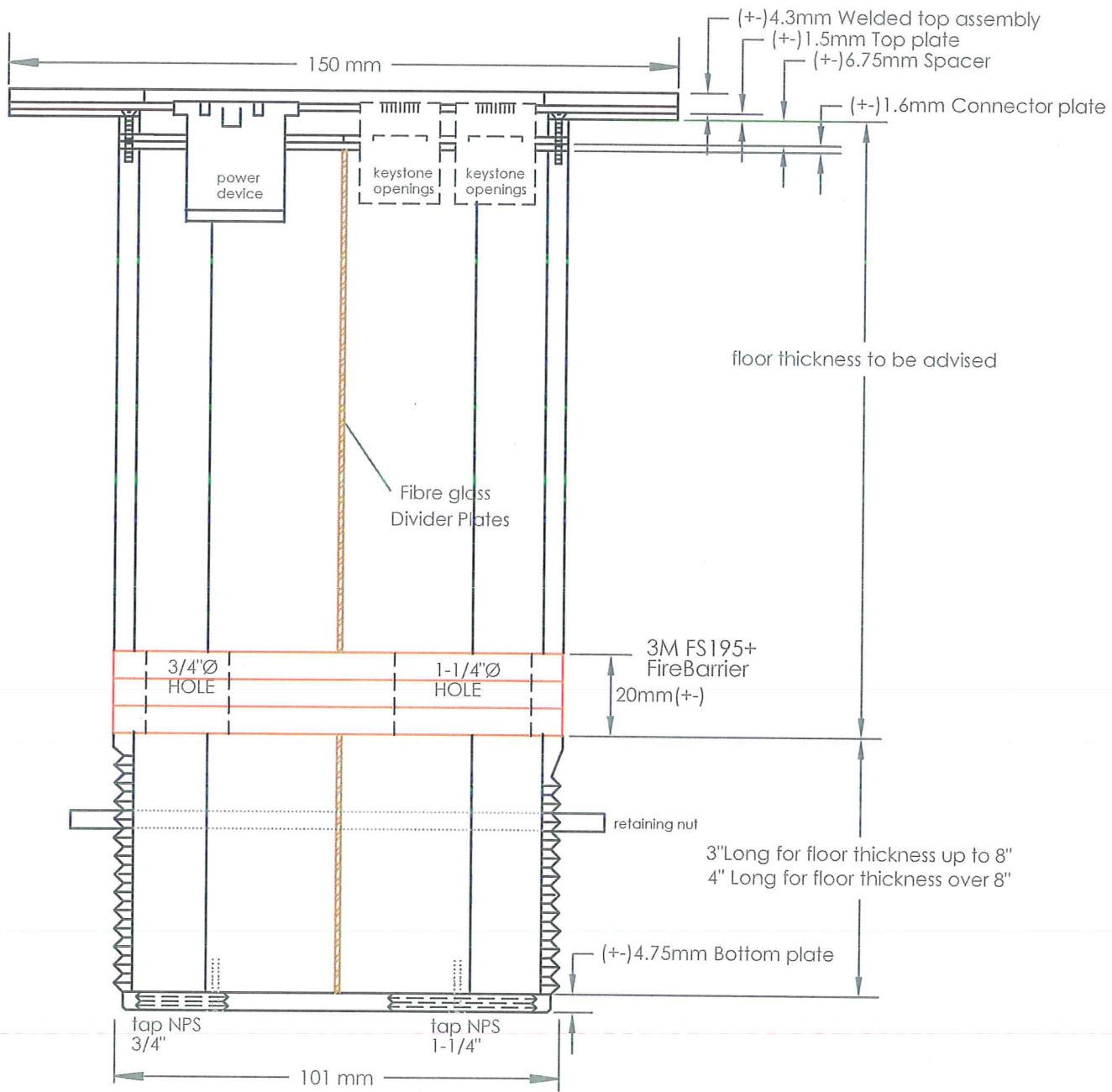


by 

888-225-2478      www.nocom.ca

SIZE A      DWG. NO. MOI-PWR2-COMM4      REV.

SCALE=n.1.s.      WEIGHT:      SHEET 2 OF 3



all tolerance (+ -) = 0.3mm

ORDERING INFO-(SEE ABBREVIATIONS)

SLAB THICKNESS \_\_\_\_\_  
 RECEPT.TYPE/colour \_\_\_\_\_  
 DATA MANUF./colour \_\_\_\_\_  
 COVER TYPE \_\_\_\_\_

**PROPRIETARY AND CONFIDENTIAL**  
 THE INFORMATION CONTAINED IN THIS DRAWING IS THE SOLE PROPERTY OF NOCOM. ANY REPRODUCTION IN PART OR AS A WHOLE WITHOUT THE WRITTEN PERMISSION OF NOCOM IS PROHIBITED.

		DIMENSIONS ARE IN MM TOLERANCES: ANGLES: ± DEGREE LINEAR: ± MM (UNLESS SPECIFIED)	
		MATERIAL See Variant table	
NEXT ASST	USED ON	FINISH	
APPLICATION		DO NOT SCALE DRAWING	

	NAME	DATE	JOB TITLE:
DRAWN	TJP	10-02-20	
CHECKED			
ENG. APPR.			
MFG APPR.			
Q.A.			
COMMENTS:			

**MULTICONNECT™**  
 by **NOCOM®**  
 888-225-2478 www.nocom.ca  
 SIZE: A DWG. NO. MOI-PWR2-COMM4 REV.  
 SCALE=n.t.s. WEIGHT: SHEET 3 OF 3