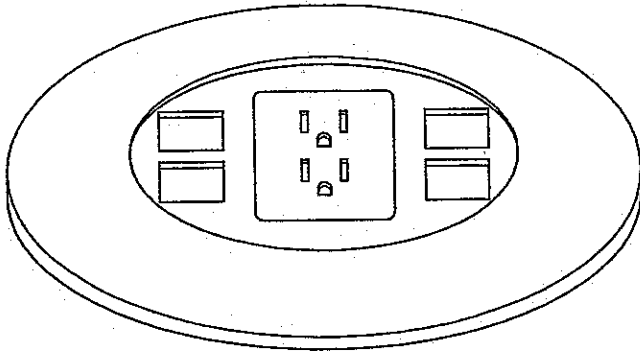
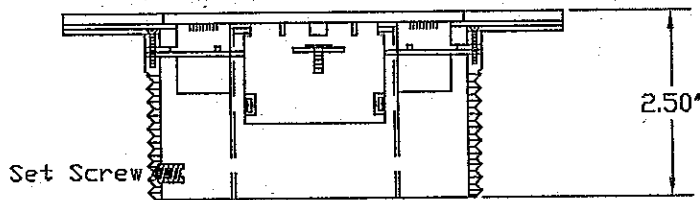


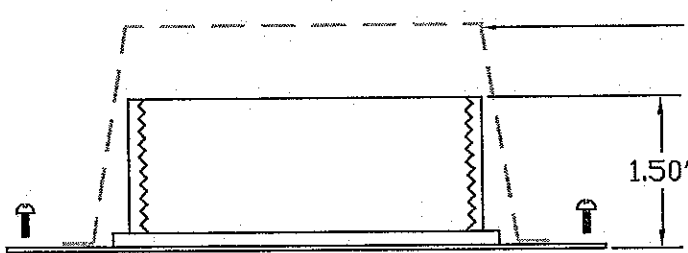
DROP IN
COVER PLATE



ISOMETRIC TOP VIEW
INSTALLED
1xDUPLEX RECEPTACLE, LEVITON
and 4 OPENINGS SUIT ALL
MANUFACTURERS KEYSTONE JACKS

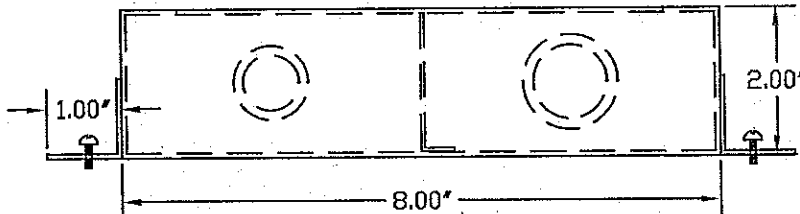


DEVICE MOUNTING BRACKET
C/W THREAD HUB AS SHOWN
1xDUPLEX RECEPT. OPENING
4xCOMM. PROVISIONS



PLASTIC CONE

8"x8" SCREW ON COVER (4 CORNERS)
C/W THREAD HUB AS SHOWN
MOUNT +1"min. to 2" max. BELOW NEW TILE



8"x8"x2" STANDARD BOX
WITH CENTRE BARRIER
C/W 2x[1/2-3/4"] k.o's
2x[3/4"-1"] k.o's

ORDERING INFO-(SEE ABBREVIATIONS)

SLAB THICKNESS _____
POWER #/required./color _____
DATA MANUF./# required _____
COVER TYPE _____

Cat.# MOI-SLB-DP-COMM4-DC
(poured-in-slab floor outlet c/w one duplex receptacle
and 4 openings suit all manufactures keystone style jacks)

MULTICONNECT™

FROM: **NOCOM®**

105 WILLOWLEA ROAD,
OTTAWA ONT., CANADA
K0A-1L0
TEL.(613) 831-8102 FAX(613) 831-8103
TOLL FREE 1-888-225-2478 e-mail info@nocom.ca
web www.multiconnect.ca

DRAWN BY:

APPROVED:

DWG #

TJP

R.B.

MOI-SLB-DP1-COMM4-RO

DATE:

SCALE:

04-02-18

N.T.S.