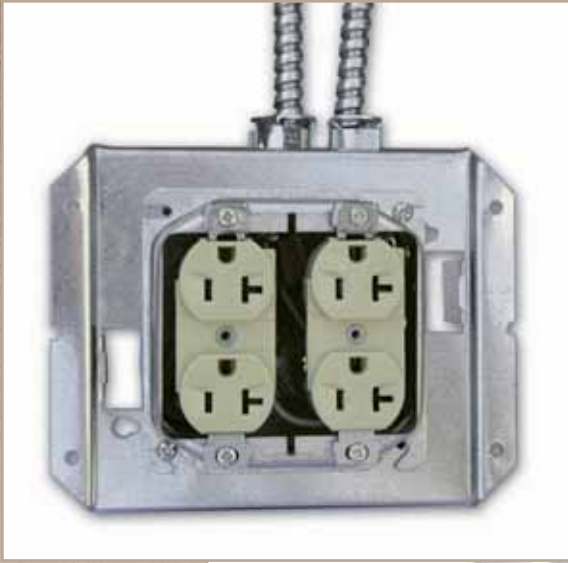
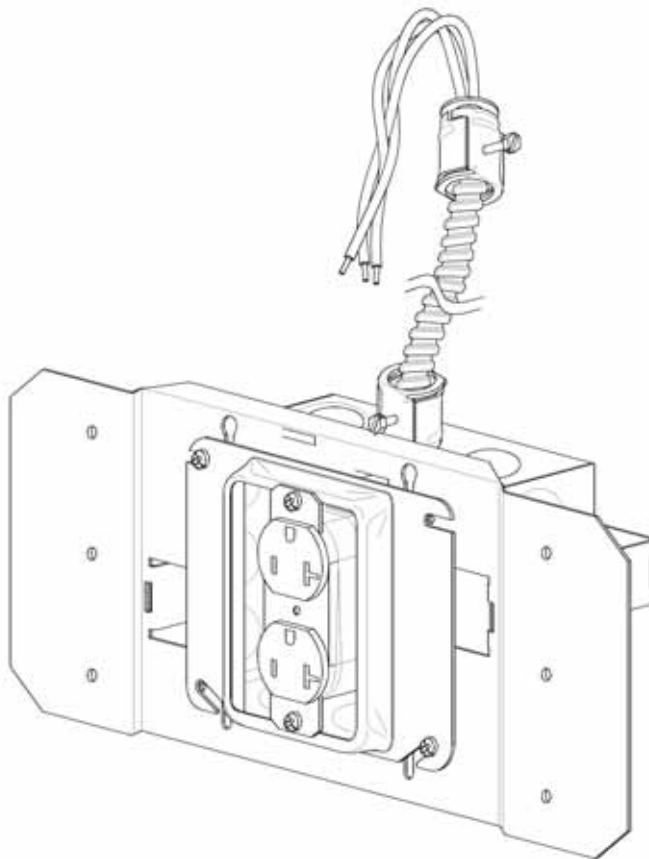


Branch Circuit Power Systems – Standard Device Assemblies and Device Protection



Branch Circuit Power Systems – Typical Device Assemblies



Features and Benefits:

- A fixed pricing
- Mounting templates greatly reduce installation time. Templates are available in one inch increments
- Reduces material storage, waste and handling
- Metal device protectors prevent damage by other trades
- Ideal for the non-typical floor layouts
- U.L. listed assembly (UL QQYZ)
- IBEW/USA

Ordering and Technical Information

| MC | 4D | S | 5/8 | L | C | 2 | S | W | R | R | U | 20 |
|---------------|-----|---------|-------------------|--------------------|-------|---------|-------|-------|----------|----------|-------------|--------------|
| Assembly type | Box | Bracket | Drywall thickness | Device Manufacture | Grade | Current | Style | Color | Device 1 | Device 2 | Orientation | Cable length |

Assembly Type

MC – Metal Clad cable on device assembly

Box

4D – 4” sq x 2-1/8” deep box

411 – 4-11/16”sq x 2-1/8” deep box

Bracket

S – Uni-fab Standard bracket

R16 – 16” adjustable “Big O” bracket

R24 – 24” adjustable “Big O” bracket

K18 – 18” tall Kick bracket

Drywall Thickness

Specify total drywall thickness or put “ADJ” for an adjustable ring that works with 1/2” thru 3/4” drywall

Device Manufacture

L – Leviton

B – Bryant

H – Hubbell

P – Pass & Seymour

Grade

C – Commercial

R – Residential

I – Industrial

H – Hospital

Current

1 – 15 Amp

2 – 20 Amp

3 – 30 Amp NEMA 14-30 receptacle

5 – 50 Amp NEMA 14-50 receptacle

Style

S – Standard style, Toggle switches and duplex receptacles

D – Decora style, Rocker switches and duplex receptacles

Color

W – White

I – Ivory

B – Brown

G – Gray

R – Red

E – Black

Device 1 and 2

R – Receptacle

H – Half switched receptacle

S – Single pole switch

3 – 3-way switch

4 – 4-way switch

G – GFCI receptacle

I – Isolated ground receptacle

U – Surge suppressor receptacle

X – No device

Orientation of ground pin on receptacle

U – Ground up

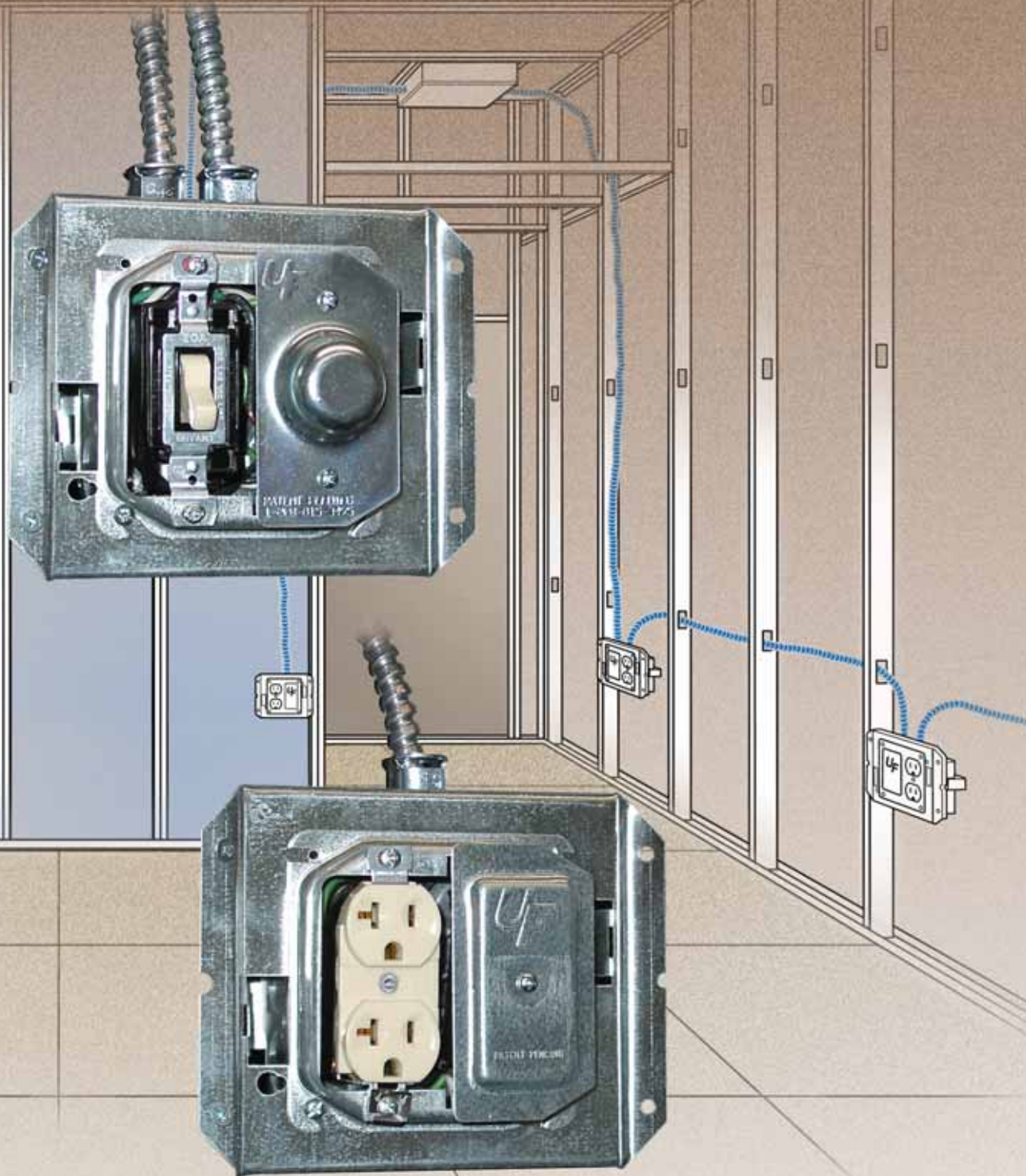
D – Ground down

Cable Length

2 - 20 feet available in 2 foot increments

20 feet or more available in 5 foot increments

Branch Circuit Power Systems – Typical Units



Typical Units – Technical Specifications

Why Use ACS/Uni-Fab Typical Units?

Planning ahead and documenting your intentions lays the ground work for the successful execution of inevitable change orders and protects against undocumented change requests. We look after the small details thereby enhancing on site productivity which, in turn, improves cost effectiveness.

Typical Units are made to your specifications. Similar to Standard Units in offering quality and cost effectiveness, Typical Units are built on a “made-to-order” basis.

This approach reduces and controls:

- Time spent on the job
- Storage space
- Material waste and handling
- Security issues

We offer project assistance in the following areas:

- Review
- Planning
- Design/layout
- Installation support

Applications

These units are used for hotels, condos, dormitories, office and retail spaces, assisted living and hospitals.

Construction

The units are UL listed components assembled to create a UL listed Wiring Assembly (UL QQYZ). They are intended for field installation in accordance with the National Electric Code (NEC).

IBEW Assembled

ACS/Uni-Fab products are built by IBEW personnel.



Typical Units – Technical Specifications

Quote

Electronic files or the electrical prints as well as any special project requirements are required to generate a quotation. The quotation includes: room counts, device counts, estimated labor for individual rooms and a recap of the project.

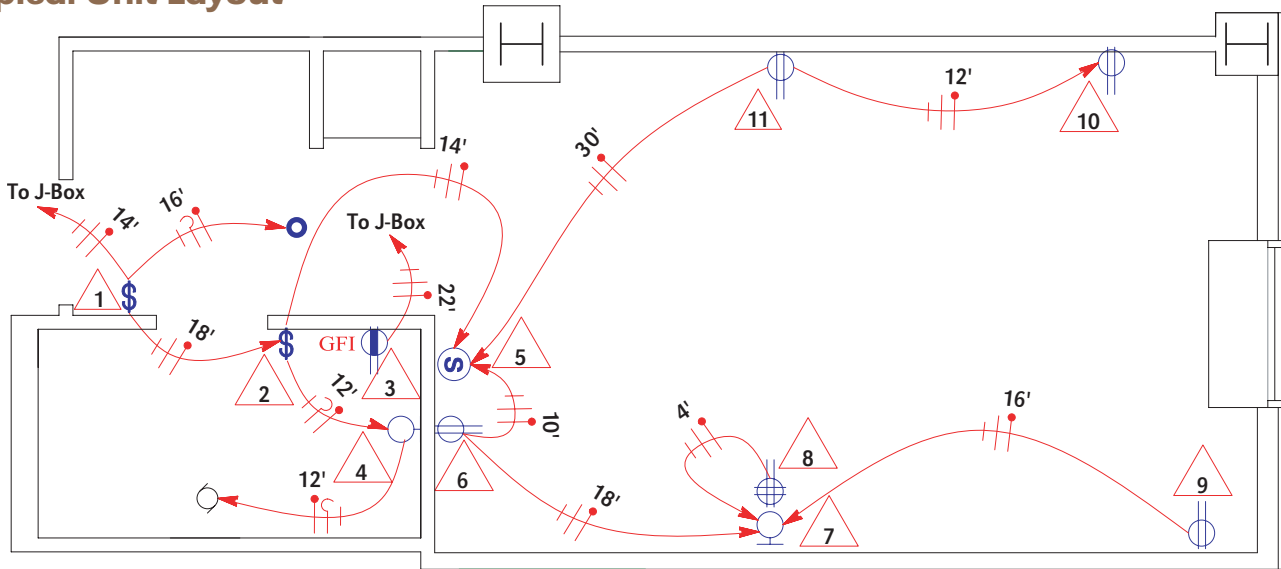
Project Time Line Initial Design

ACS/Uni-Fab, with the Electrical Contractor, will coordinate the specific project requirements, which include project schedule, device type, color, amperage, height, ground up/down, wall thickness, etc.

After receipt of the drawings and project requirements, the initial design process begins. A typical unit layout is generated, allowing a visual confirmation of the project scope and contractor intent. Also produced is a detail report which provides specific information about each detail represented by numbered triangles on the shop drawings. This detail number shows on both the shop drawing and the detail report and corresponds to the label on the back of each device assembly.

Electronic files, if available, are recommended as they expedite the design process.

Typical Unit Layout

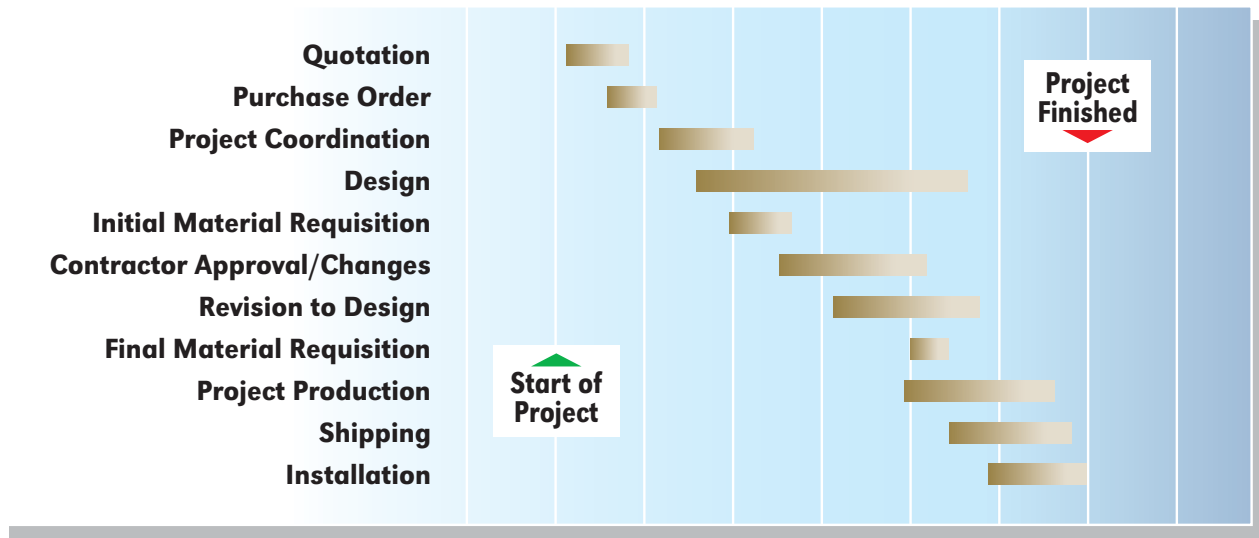


Unit Detail Report

| Generic Hotel (0000-01) | | Area | | Double Double A | | | | | | | | | | |
|-------------------------|-------------------|---------|----------|-----------------|-----------|----------|-----------|------------|-------------|-----------|--------|--------|-------|----------|
| Group | ALL | Drawing | Revision | 01/06/2000 | | | | | | | | | | |
| Date | | | | Near | | | | | | | | | | |
| Detail | Cat # | Box | Ring | Bracket | Device 1 | Device 2 | Cable Arm | Cable Type | Cable Strip | Far Conn. | Length | Conn. | Strip | Location |
| 1 | SMC902NI-16-18-14 | 4S Deep | 1G 3/4" | S | CSBI20-BI | | MC | 12/2 | 0.7 | AFC-50 | 16 | AFC-50 | 0.7 | TC |
| | | | | | | | MC | 12/2 | 0.7 | AFC-50 | 18 | AFC-50 | 0.7 | TL |
| | | | | | | | MC | 12/2 | 0.7 | AFC-50 | 14 | AFC-50 | 0.7 | TR |
| 2 | SMC902NI-14-12 | 4S Deep | 1G 3/4" | S | CSBI20-BI | | MC | 12/2 | 0.7 | AFC-50 | 14 | AFC-50 | 0.7 | TC |
| | | | | | | | MC | 12/2 | 0.7 | AFC-50 | 12 | AFC-50 | 0.7 | TL |
| | | | | | | | MC | 12/2 | 0.7 | AFC-50 | 12 | AFC-50 | 0.7 | TR |

Typical Units – Technical Specifications

Project Timeline



Approval

The Electrical Contractor plays a key role in maintaining the project schedule. The shop drawings should be reviewed and approved as quickly as possible after the receipt of the initial design in order to keep the project on schedule.

A quick turn-around allows ample time for the balance of the 'Project Time Line' to be completed.

The initial design should be reviewed closely for:

- Cable lengths
- Wall thickness
- Device type
- Overall layout

After reviewing the design, the Contractor should approve with changes or as shown and return the approvals to ACS/Uni-Fab.

Packaging

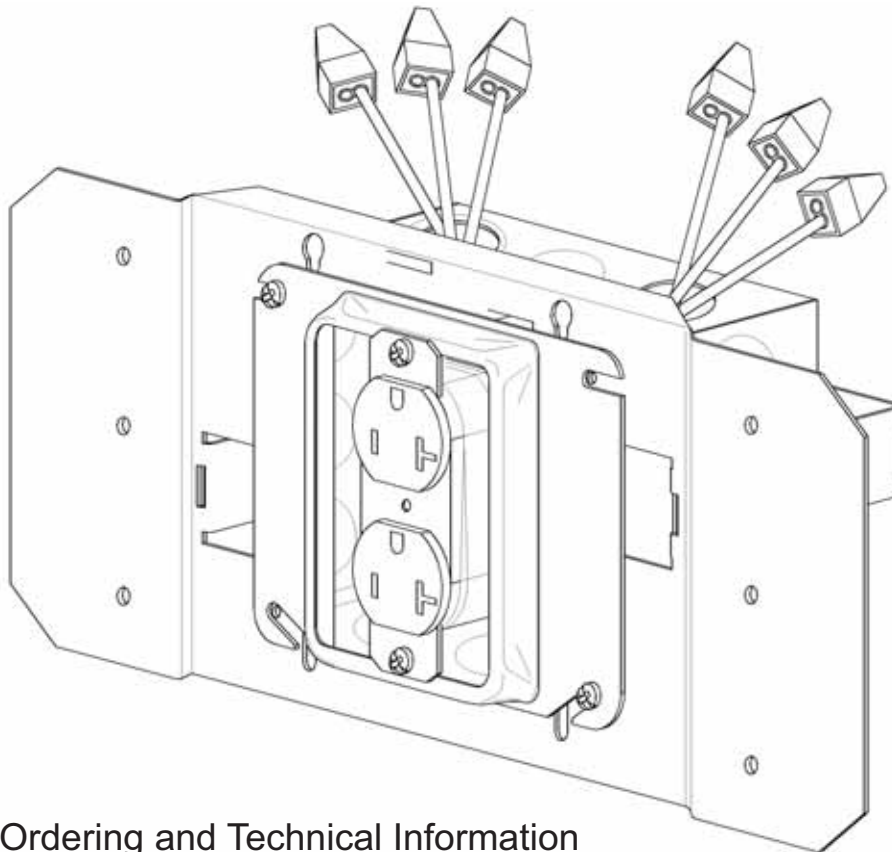
ACS/Uni-Fab makes every effort to reduce overall job cost. As a part of that effort, we will box and palletize your order by room number, area, section, like products, etc. to minimize sort time at the job-site. Each box contains a set of shop drawings allowing the electrician to quickly identify the placement of each device assembly.

Shipping

ACS/Uni-Fab contracts with a network of carriers. Should the Contractor request a carrier outside our contracts or special handling, additional freight costs may apply.



Branch Circuit Power Systems – Cable Ready Device Assemblies



Features and Benefits:

- A fixed pricing
- The Contractor can provide his own cable or buy Uni-Fab's custom-cut whips
- Mounting templates greatly reduce installation time. Templates are available in one inch increments
- Reduces material storage, waste and handling
- Metal device protectors prevent damage by other trades
- Ideal for the non-typical floor layouts
- U.L. listed assembly (UL QQYZ)
- IBEW/USA

Ordering and Technical Information

CR 4D S 5/8 L C 2 S W R R U I/O

| Assembly type | Box | Bracket | Drywall thickness | Device Manufacture | Grade | Current | Style | Color | Device 1 | Device 2 | Orientation | CR configuration |
|---------------|-----|---------|-------------------|--------------------|-------|---------|-------|-------|----------|----------|-------------|------------------|
|---------------|-----|---------|-------------------|--------------------|-------|---------|-------|-------|----------|----------|-------------|------------------|

Assembly Type

CR – Cable Ready

Box

4D – 4" sq x 2-1/8" deep box

411 – 4-11/16"sq x 2-1/8" deep box

Bracket

S – Uni-fab Standard bracket

R16 – 16" adjustable "Big O" bracket

R24 – 24" adjustable "Big O" bracket

K18 – 18" tall Kick bracket

Drywall Thickness

Specify total drywall thickness or put "ADJ" for an adjustable ring that works with 1/2" thru 3/4" drywall

Device Manufacture

L – Leviton

B – Bryant

H – Hubbell

P – Pass & Seymour

Grade

C – Commercial

R – Residential

I – Industrial

H – Hospital

Current

1 – 15 Amp

2 – 20 Amp

Style

S – Standard style, Toggle switches and duplex receptacles

D – Decora style, Rocker switches and duplex receptacles

Color

W – White

I – Ivory

B – Brown

G – Gray

R – Red

E – Black

Device 1 and 2

R – Receptacle

H – Half switched receptacle

S – Single pole switch

3 – 3-way switch

4 – 4-way switch

G – GFCI receptacle

I – Isolated ground receptacle

U – Surge suppressor receptacle

X – No device

Orientation of ground pin on receptacle

U – Ground up

D – Ground down

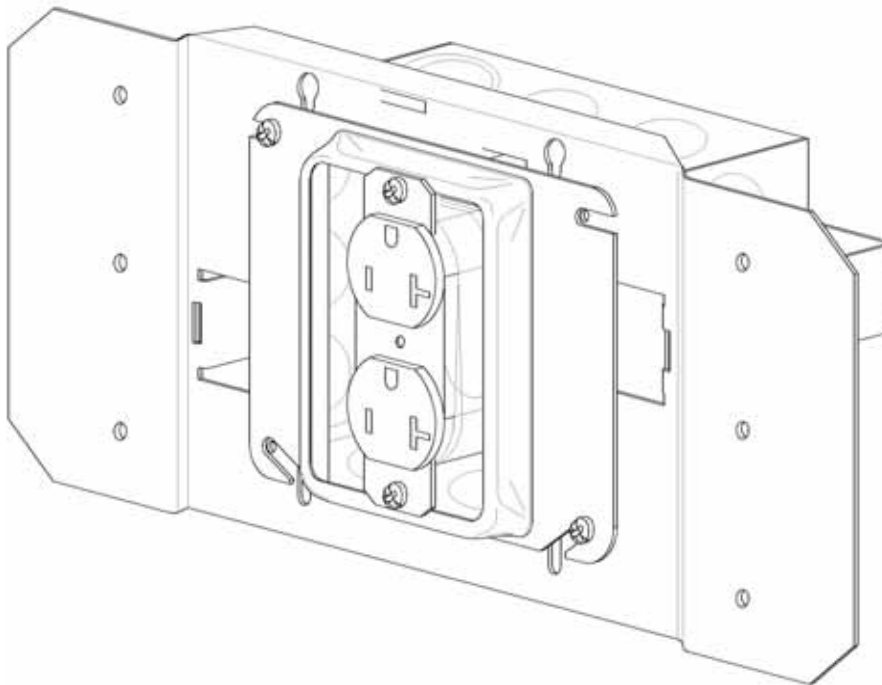
Cable ready configuration

I – In only

I/O – In and out

See CR wiring diagrams for more options

Branch Circuit Power Systems – Assembly Required Device Assemblies



Features and Benefits:

- A fixed pricing
- The Contractor can provide his own cable or buy Uni-Fab's custom-cut whips
- Mounting templates greatly reduce installation time. Templates are available in one inch increments
- Reduces material storage, waste and handling
- Metal device protectors prevent damage by other trades
- Ideal for the non-typical floor layouts
- U.L. listed assembly (UL QQYZ)
- IBEW/USA

Ordering and Technical Information

| Assembly type | Box | Bracket | Drywall thickness | Device Manufacture | Grade | Current | Style | Color | Device 1 | Device 2 | Orientation |
|---------------|-----|---------|-------------------|--------------------|-------|---------|-------|-------|----------|----------|-------------|
|---------------|-----|---------|-------------------|--------------------|-------|---------|-------|-------|----------|----------|-------------|

Assembly Type

AR – Assembly Required

Box

4D – 4" sq x 2-1/8" deep box

411 – 4-11/16"sq x 2-1/8" deep box

Bracket

S – Uni-fab Standard bracket

R16 – 16" adjustable "Big O" bracket

R24 – 24" adjustable "Big O" bracket

K18 – 18" tall Kick bracket

Drywall Thickness

Specify total drywall thickness or put "ADJ" for an adjustable ring that works with 1/2" thru 3/4" drywall

Device Manufacture

L – Leviton

B – Bryant

H – Hubbell

P – Pass & Seymour

Grade

C – Commercial

R – Residential

I – Industrial

H – Hospital

Current

1 – 15 Amp

2 – 20 Amp

3 – 30 Amp NEMA 14-30 receptacle

5 – 50 Amp NEMA 14-50 receptacle

Style

S – Standard style, Toggle switches and duplex receptacles

D – Decora style, Rocker switches and duplex receptacles

Color

W – White

I – Ivory

B – Brown

G – Gray

R – Red

E – Black

Device 1 and 2

R – Receptacle

H – Half switched receptacle

S – Single pole switch

3 – 3-way switch

4 – 4-way switch

G – GFCI receptacle

I – Isolated ground receptacle

U – Surge suppressor receptacle

X – No device

Orientation of ground pin on receptacle

U – Ground up

D – Ground down